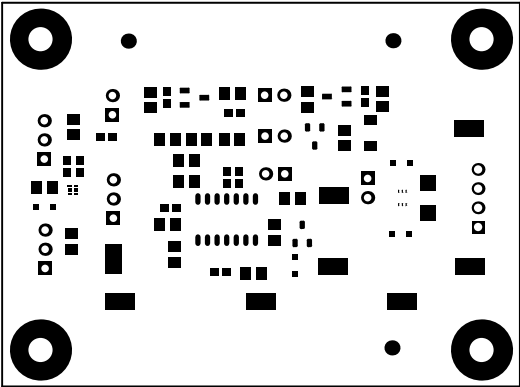
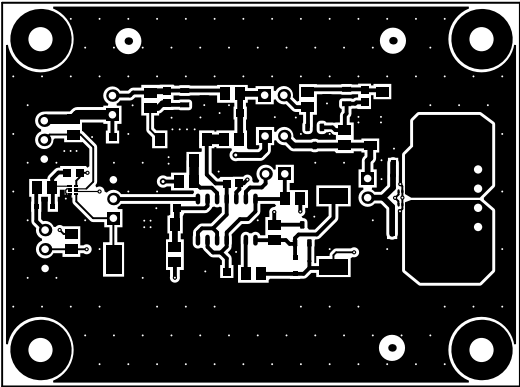


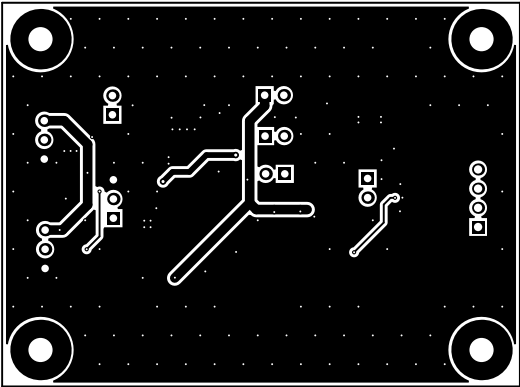
ALL ARTWORK VIEWED FROM TOP SIDE	BOARD #: ISBA-EVM-01064 REV: Rev A	SUN REV: Not In VersionControl
LAYER NAME = Top Overlay	TID #: TIDA-01064	
PLOT NAME = Top Overlay	GENERATED : 8/25/2016 4:34:27 PM	TEXAS INSTRUMENTS



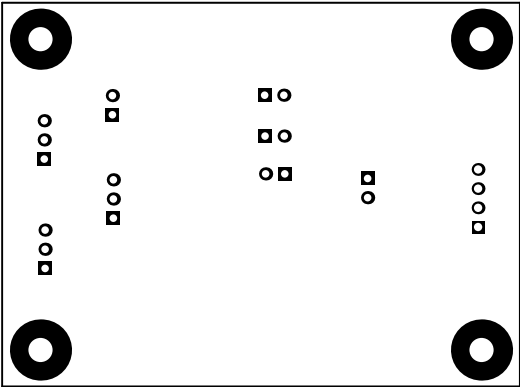
ALL ARTWORK VIEWED FROM TOP SIDE	BOARD #: ISBA-EVM-01064 REV: Rev A	SUN REV: Not In VersionControl
LAYER NAME = Top Solder	TID #: TIDA-01064	
PLOT NAME = Top Solder Mask	GENERATED : 8/25/2016 4:34:28 PM	TEXAS INSTRUMENTS



ALL ARTWORK VIEWED FROM TOP SIDE	BOARD #: ISBA-EVM-01064 REV: Rev A	SUN REV: Not In VersionControl
LAYER NAME = Top Layer	TID #: TIDA-01064	
PLOT NAME = Top Layer	GENERATED : 8/25/2016 4:34:29 PM	TEXAS INSTRUMENTS

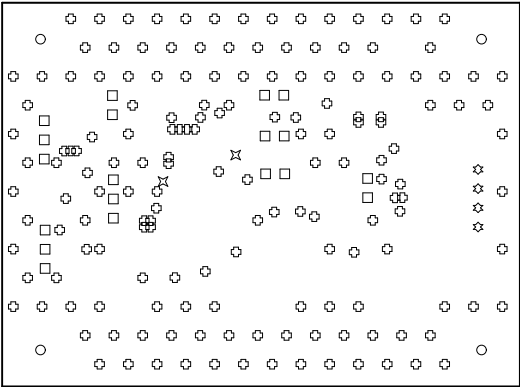


ALL ARTWORK VIEWED FROM TOP SIDE	BOARD #: ISBA-EVM-01064 REV: Rev A	SUN REV: Not In VersionControl
LAYER NAME = Bottom Layer	TID #: TIDA-01064	
PLOT NAME = Bottom Layer	GENERATED : 8/25/2016 4:34:29 PM	TEXAS INSTRUMENTS

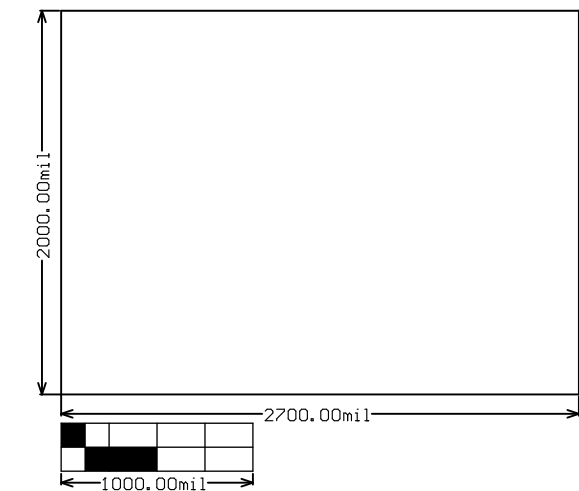


ALL ARTWORK VIEWED FROM TOP SIDE	BOARD #: ISBA-EVM-01064	REV: Rev A	SUN REV: Not In VersionControl
LAYER NAME = Bottom Solder	TID #: TIDA-01064		
PLOT NAME = Bottom Solder Mask	GENERATED : 8/25/2016	4:34:30 PM	TEXAS INSTRUMENTS

Symbol	Quantity	Finished Hole Size	Plated	Hole Type	Drill Layer Pair	Hole Tolerance
⊗	163	10.00mil (0.254mm)	PTH	Round	Top Layer - Bottom Layer	
⊗	2	16.00mil (0.406mm)	PTH	Round	Top Layer - Bottom Layer	
□	19	39.37mil (1.000mm)	PTH	Round	Top Layer - Bottom Layer	
⊗	4	43.31mil (1.100mm)	PTH	Round	Top Layer - Bottom Layer	
○	4	125.98mil (3.200mm)	PTH	Round	Top Layer - Bottom Layer	
	192 Total					



ALL ARTWORK VIEWED FROM TOP SIDE	BOARD #: ISBA-EVM-01064 REV: Rev A	SUN REV: Not In VersionControl
LAYER NAME = Drill Drawing	TID #: TIDA-01064	
PLOT NAME = Drill Drawing	GENERATED : 8/25/2016 4:34:31 PM	TEXAS INSTRUMENTS



ALL ARTWORK VIEWED FROM TOP SIDE	BOARD #:	ISBA-EVM-01064	REV:	Rev A	SUN REV:	Not In VersionControl
LAYER NAME = M2 Board Dimensions	TID #:	TIDA-01064				
PLOT NAME = Board Dimensions	GENERATED	: 8/25/2016 4:34:32 PM			TEXAS INSTRUMENTS	